

MORE/

more of what you are looking

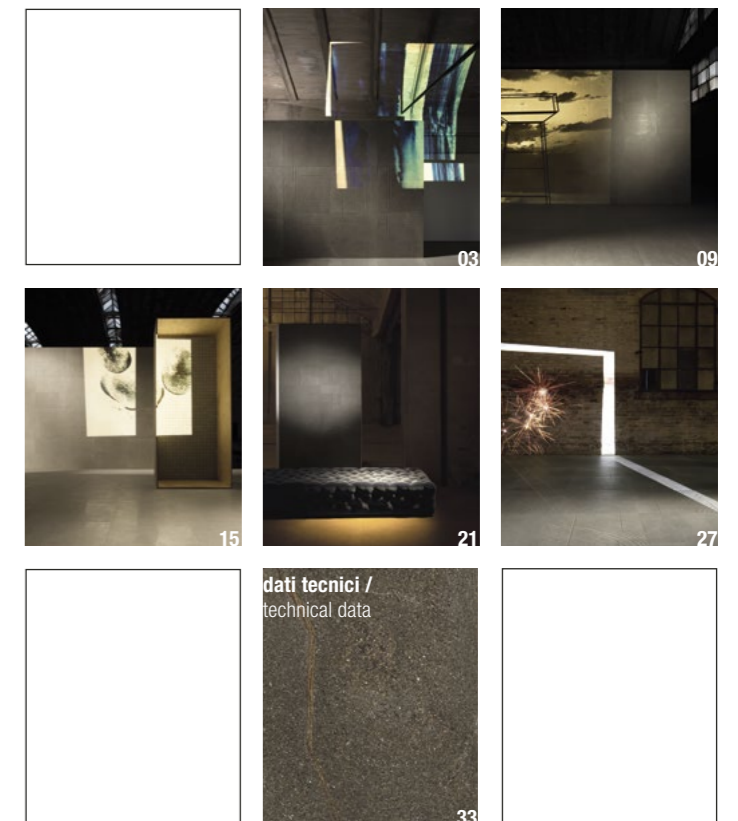
LE
ONAR
DO
EVOLUTIONSTILE



MORE/

più di quello che stai cercando

more of what you are looking

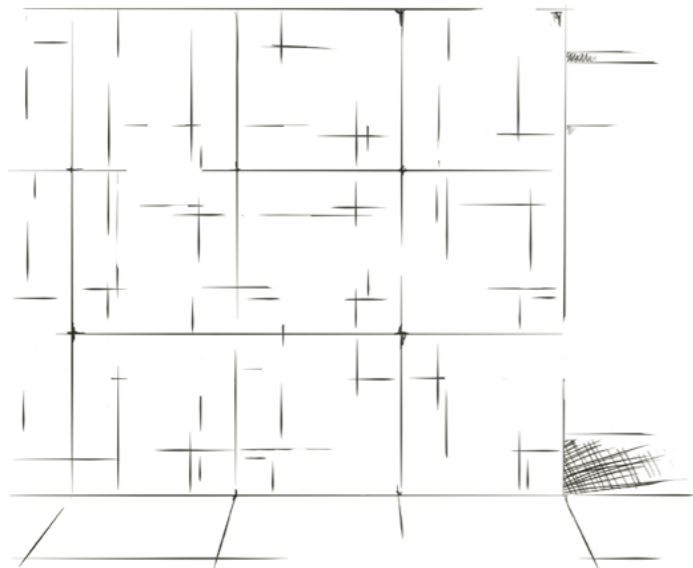


² MORE/

E' dalla lavorazione dei blocchi di marmo che More trova il suo percorso creativo.

La stessa pietra usata normalmente come lastra da pavimento viene utilizzata anche come base sulla quale tagliare i grandi blocchi di marmo.

/ The creative development of the More line began with the quarrying process of marble blocks. We were inspired by the same cut stone that is normally used as floor slabs but also as a base on which large marble blocks are cut.



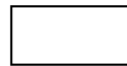
Formati / Sizes Formats / Formate Formatos / Форматы / 规格



60X60/24"X24"



15X15/6"X6"



30X60/12"X24"



30X30/12"X12"

Superfici / Surfaces Surfaces / Oberflächen Superficies / Поверхности / 表面



N

ST



LP

ST



Colori / Colours Couleurs / Farben Colores / Цвета / 颜色



T



B



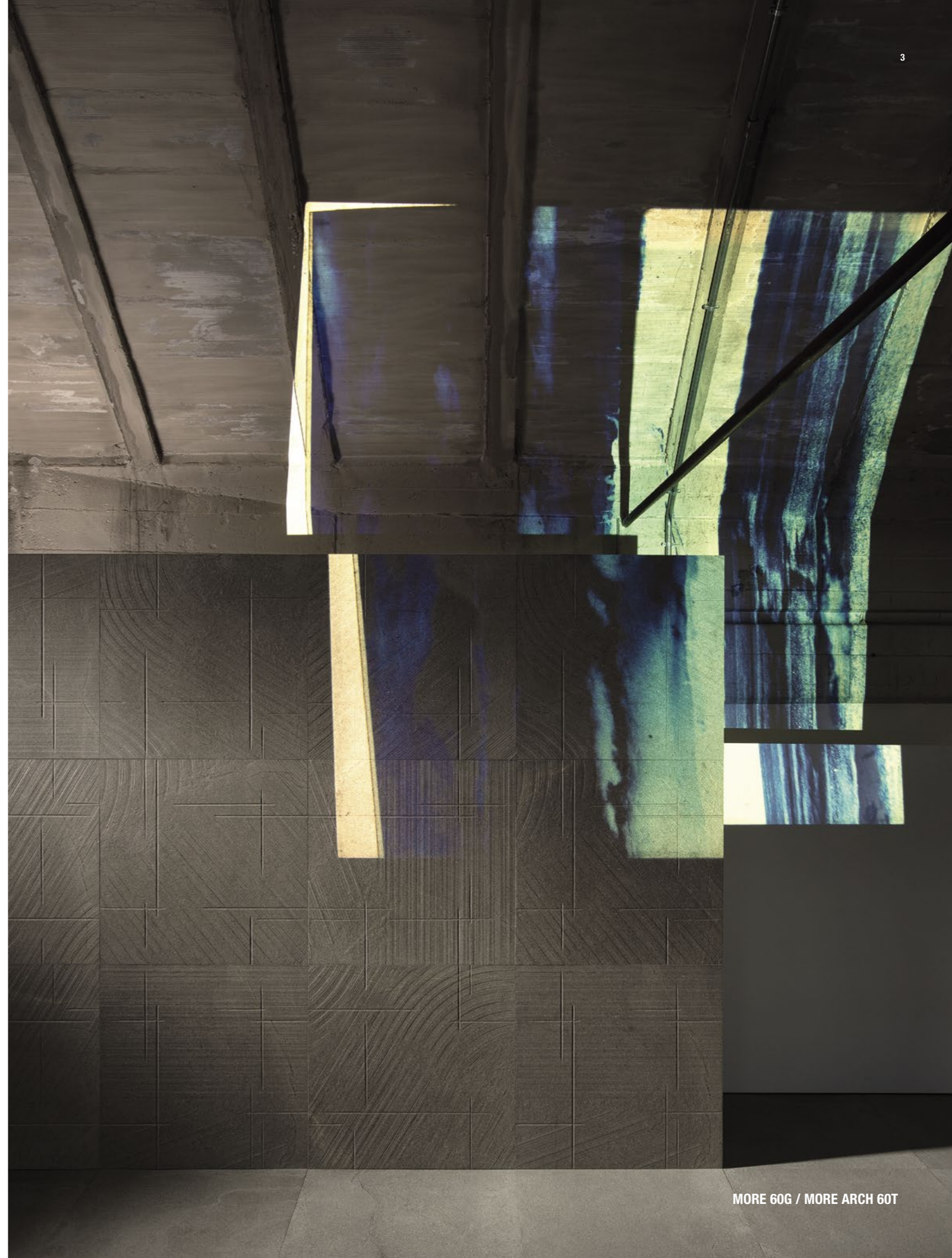
W

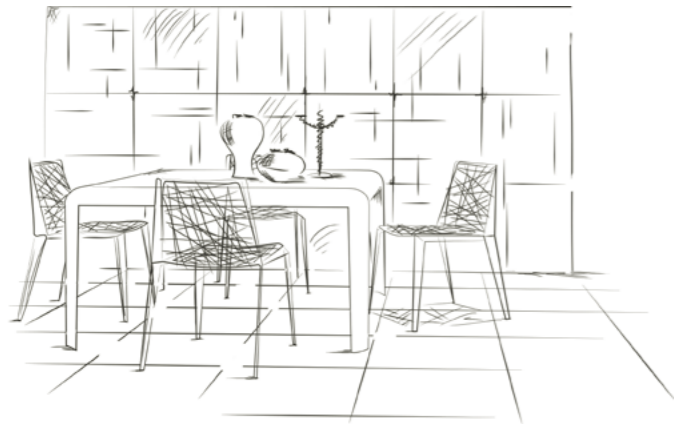


G

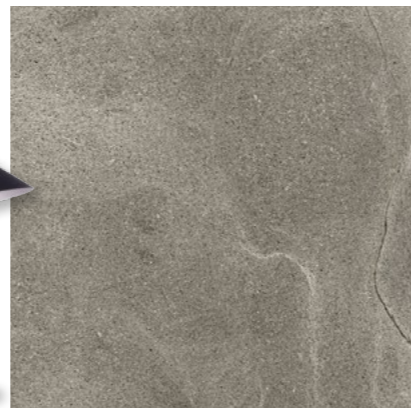


N





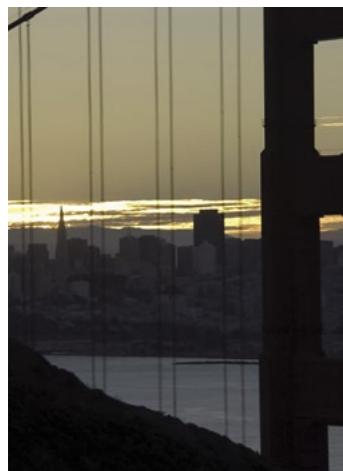
Contaminazioni creative
Creative combinations



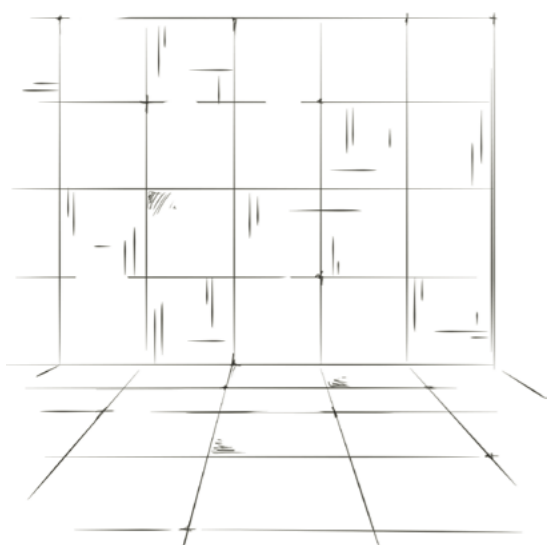


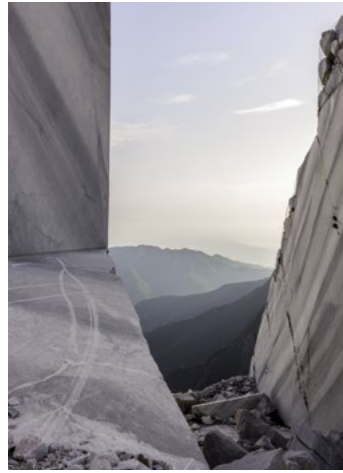
8 MORE/W

Il prodotto
è proposto in due
versioni abbinabili
tra di loro:
la pietra naturale
- MORE - e la
pietra ritagliata
- MORE ARCH -,
entrambe con finitura
naturale e lappata.



/ The product is available in two versions that can be combined together: natural stone - MORE - and cut stone - MORE ARCH - both with a natural and lapped finish.





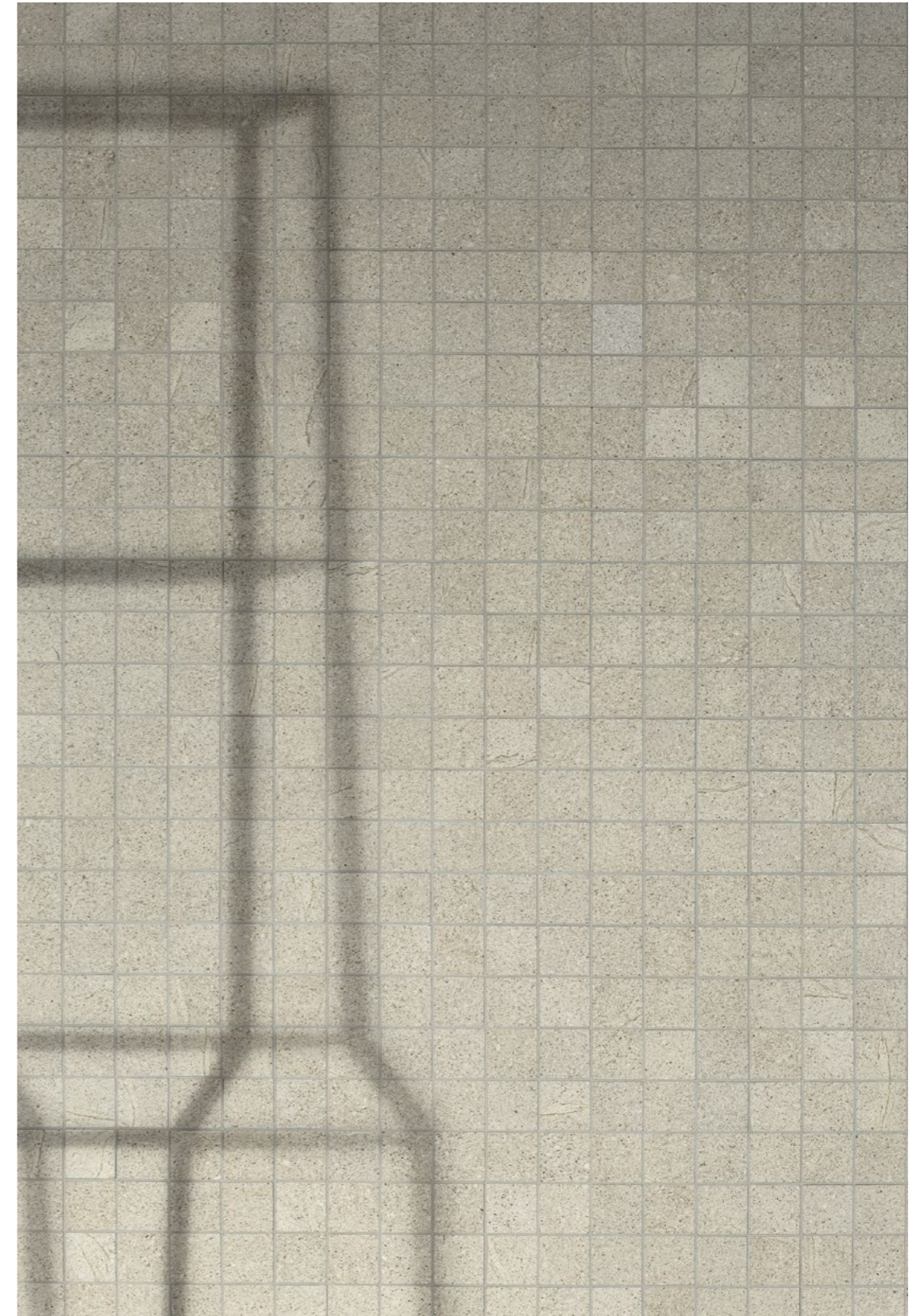
Contaminazioni creative
Creative combinations





MORE 60W LP / MORE ARCH 60WLP

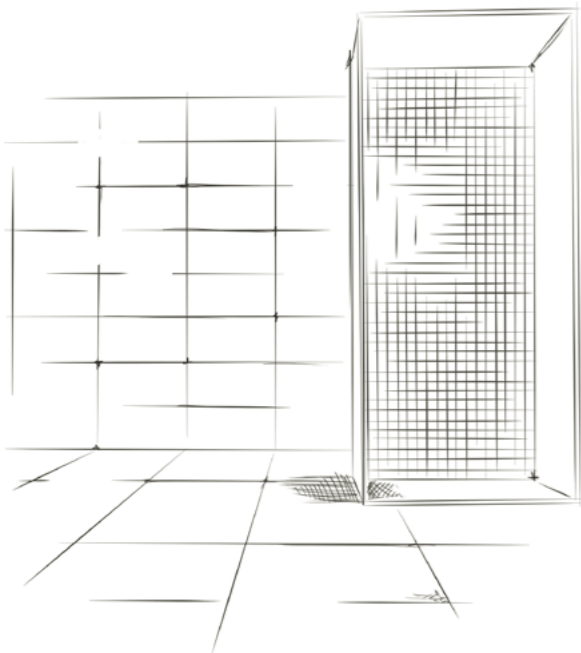
MK.MORE 30W

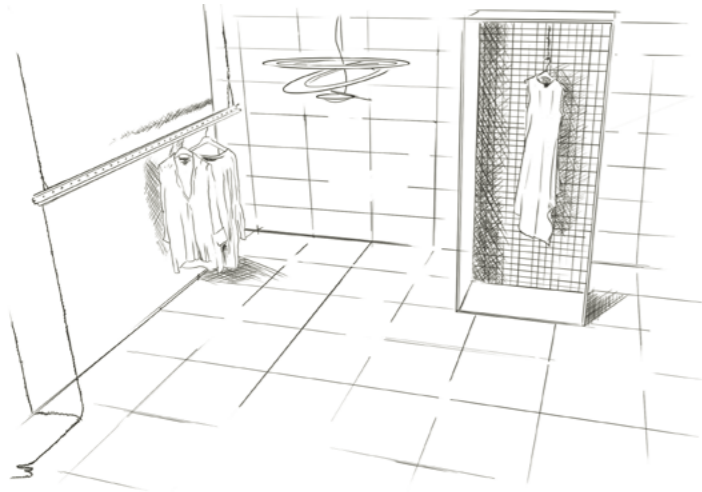
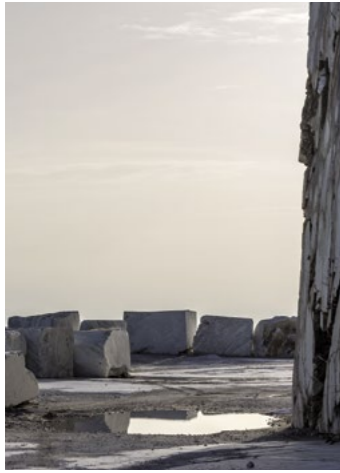


Il progetto
si compone di
5 colorazioni
sia in tonalità
più calde
che in tonalità
più fredde
e di 4 formati
modulari tra di
loro.

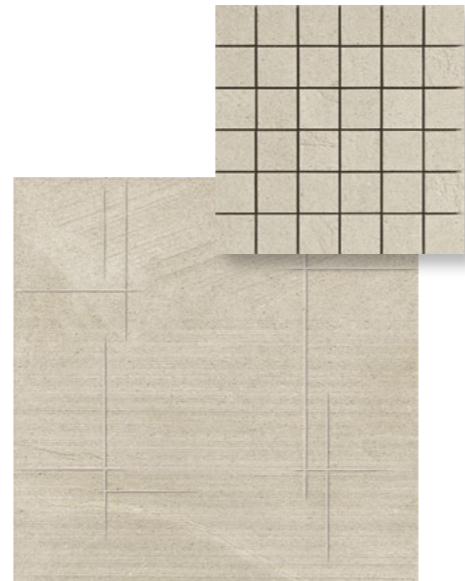


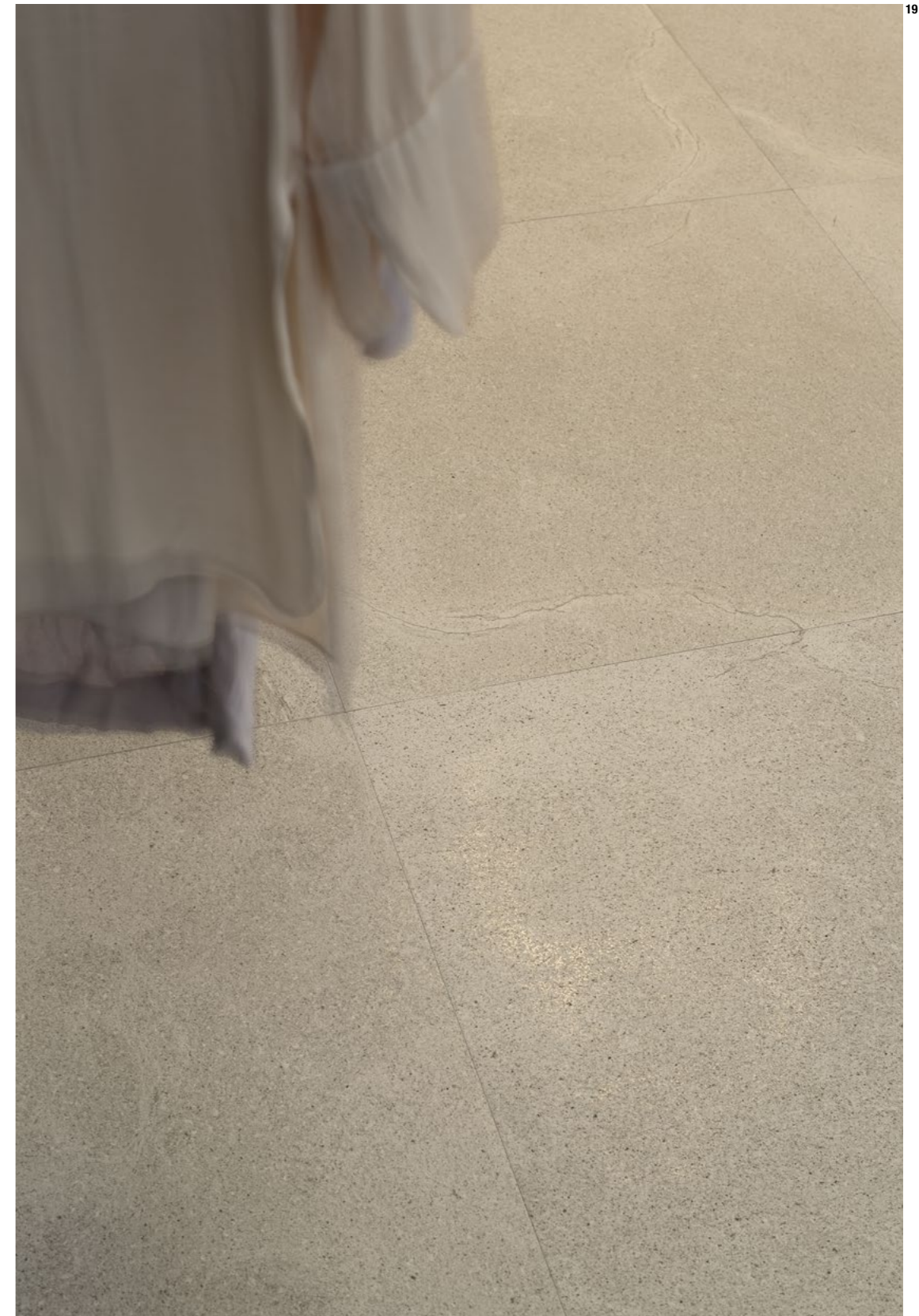
/ The project features 5 different warm and cold colours and 4 modular formats.



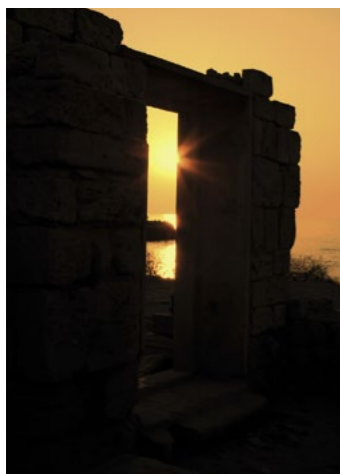


Contaminazioni creative
Creative combinations



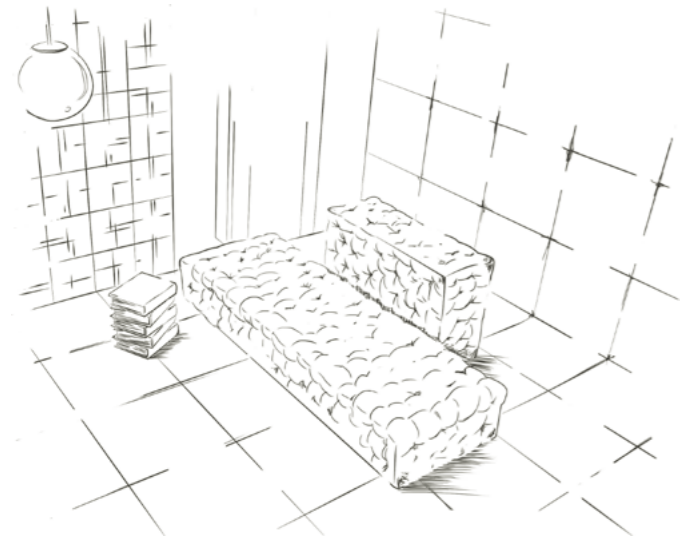


La superficie è interrotta in modo irregolare da righe più o meno profonde e da segni che conferiscono al prodotto un aspetto vissuto e piacevolmente irregolare.

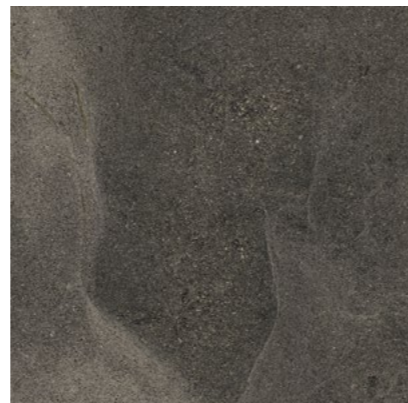


/ The surface features irregular lines of varying depth and marks that give the product a well-worn and pleasingly irregular finish.





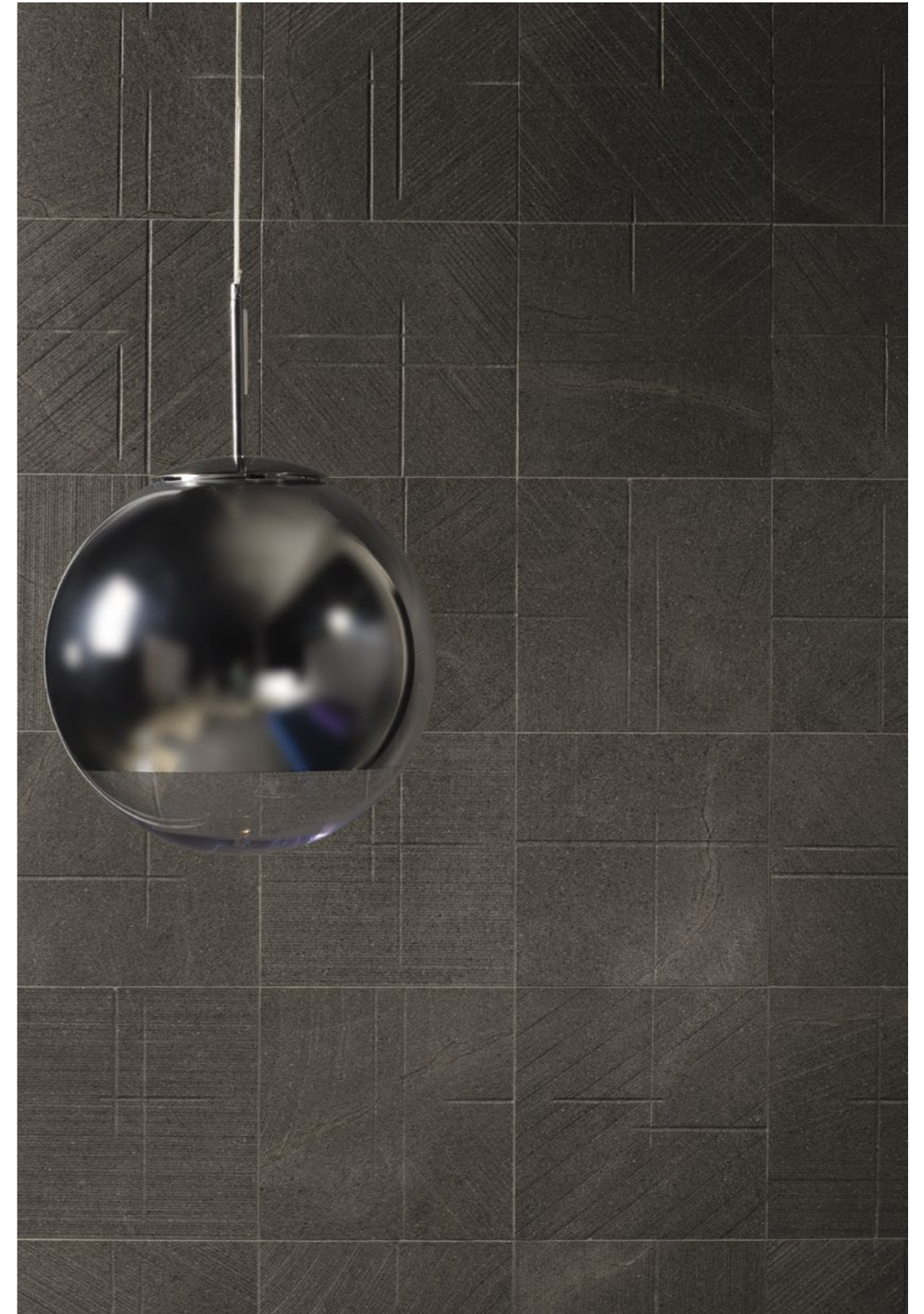
Contaminazioni creative
Creative combinations





MORE 60N LP / MORE ARCH 30N

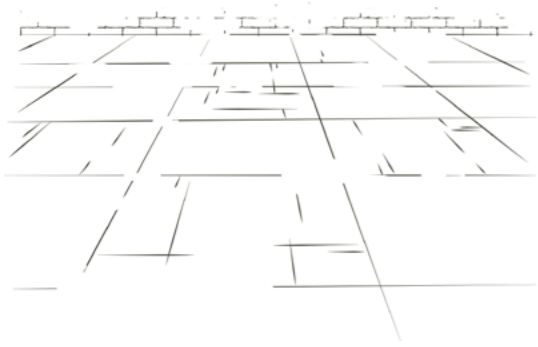
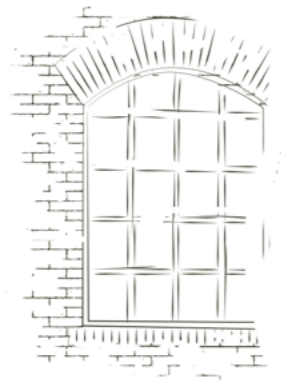
MORE ARCH 30N

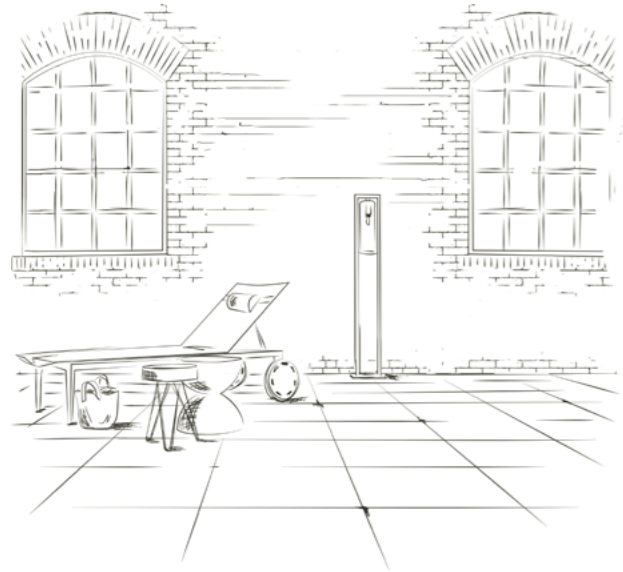


Profondi sono i solchi sulla superficie, a rievocare le lavorazioni come se fosse una pietra naturale estratta e lavorata nelle cave di marmo.



/ Deep grooves on the surface recall the stone cutting process of quarried natural stone.





Contaminazioni creative
Creative combinations





Gres porcellanato a massa colorata / Coloured body porcelain tile / Grès cérame teint dans la masse / Eingefärbtes Feinsteinzeug
 Gres porcelánico coloreado en masa / Керамогранит, окрашенный в массу / 彩胎瓷质砖

ISO 13006 - G - Bla (E ≤ 0,5%) UNI EN 14411 - G -

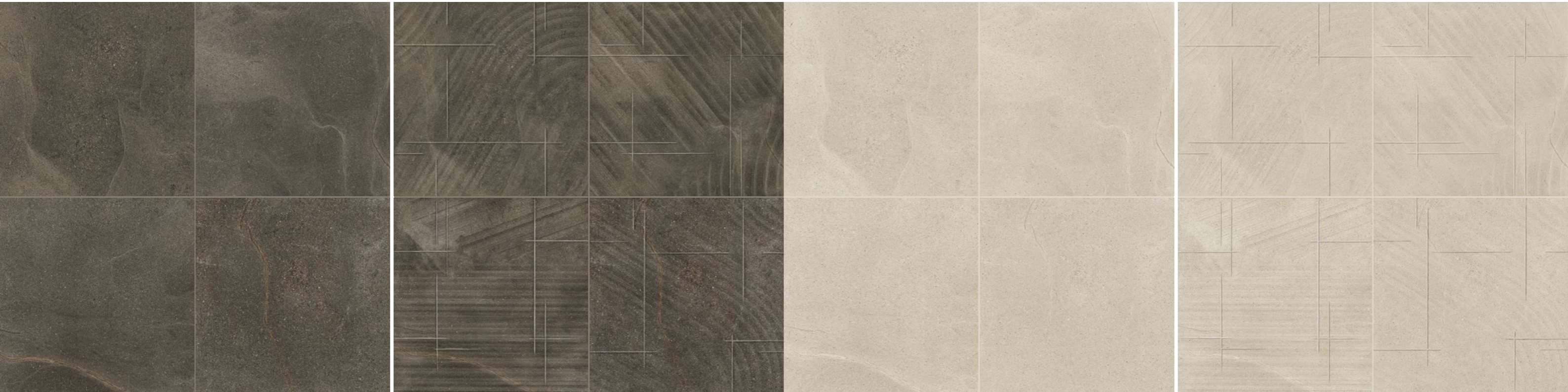


MORE T

MORE ARCH T

MORE B

MORE ARCH B



N ST Re m 10,5



60X60
24"X24"



30X60
12"X24"



30X30
12"X12"



15X15
6"X6"

LP ST Re m 10,5



60X60
24"X24"

N ST Re m 10,5



60X60
24"X24"



30X60
12"X24"



30X30
12"X12"



15X15
6"X6"

LP ST Re m 10,5



60X60
24"X24"

MORE T	MORE 60T	MORE 36T	MORE 30T	MORE 15T	MORE 60T LP
MORE B	MORE 60B	MORE 36B	MORE 30B	MORE 15B	MORE 60B LP

MORE ARCH T	MORE ARCH 60T	MORE ARCH 36T	MORE ARCH 30T	MORE ARCH 15T	MORE ARCH 60TLP
MORE ARCH B	MORE ARCH 60B	MORE ARCH 36B	MORE ARCH 30B	MORE ARCH 15B	MORE ARCH 60BLP

Gres porcellanato a massa colorata / Coloured body porcelain tile / Grès cérame teint dans la masse / Eingefärbtes Feinsteinzeug
 Gres porcelánico coloreado en masa / Керамогранит, окрашенный в массу / 彩胎瓷质砖

ISO 13006 - G - BIa (E ≤ 0,5%) UNI EN 14411 - G -



MORE W

MORE ARCH W

MORE G

MORE ARCH G



60X60
24"X24"



30X60
12"X24"



30X30
12"X12"



15X15
6"X6"



60X60
24"X24"



60X60
24"X24"



30X60
12"X24"



30X30
12"X12"



15X15
6"X6"



60X60
24"X24"

MORE W	MORE 60W	MORE 36W	MORE 30W	MORE 15W	MORE 60W LP
MORE G	MORE 60G	MORE 36G	MORE 30G	MORE 15G	MORE 60G LP

MORE ARCH W	MORE ARCH 60W	MORE ARCH 36W	MORE ARCH 30W	MORE ARCH 15W	MORE ARCH 60WLP
MORE ARCH G	MORE ARCH 60G	MORE ARCH 36G	MORE ARCH 30G	MORE ARCH 15G	MORE ARCH 60GLP

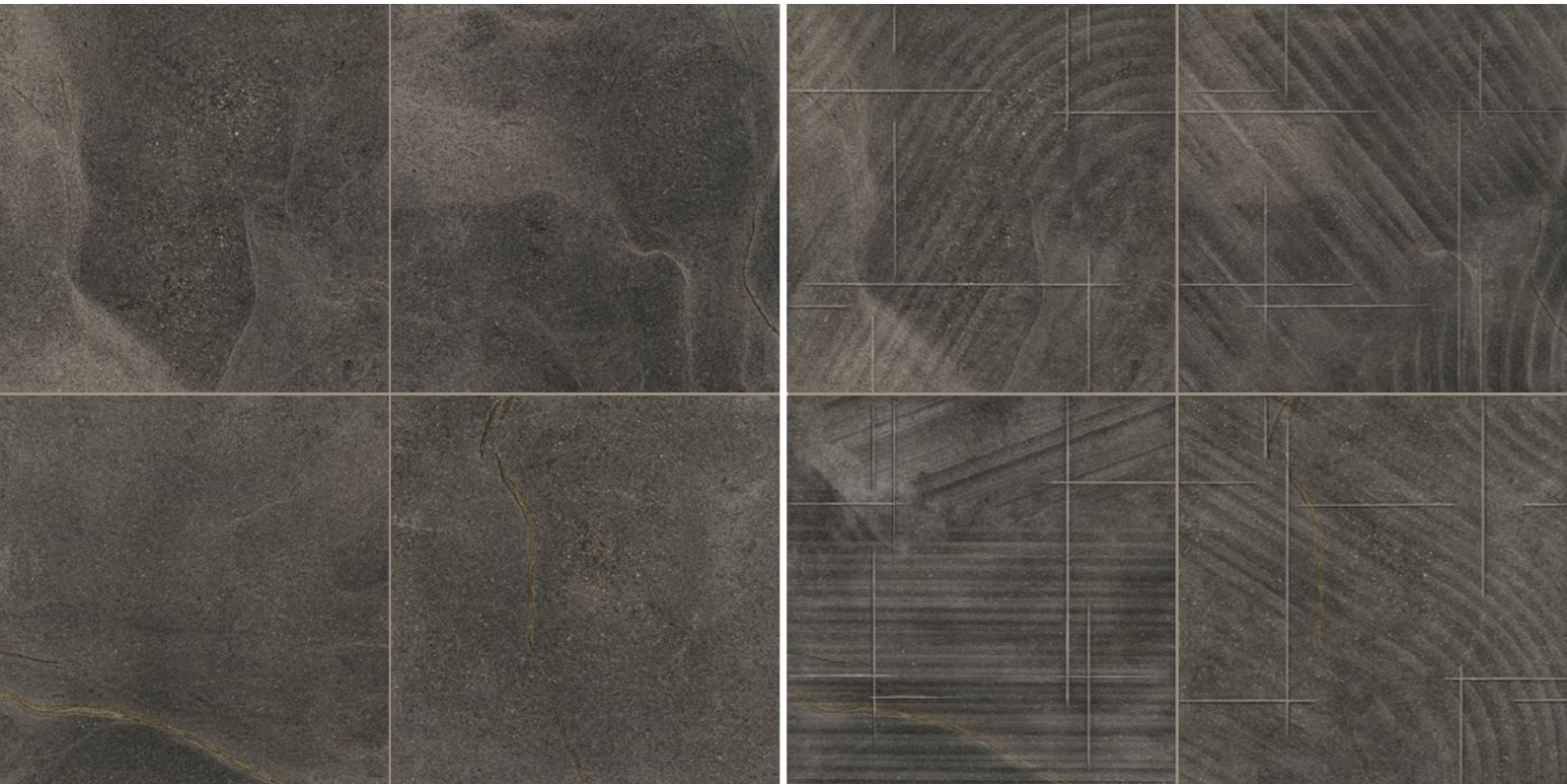
Gres porcellanato a massa colorata / Coloured body porcelain tile / Grès cérame teint dans la masse / Eingefärbtes Feinsteinzeug
 Gres porcelánico coloreado en masa / Керамогранит, окрашенный в массу / 彩胎瓷质砖

ISO 13006 - G - BIa (E ≤ 0,5%) UNI EN 14411 - G -

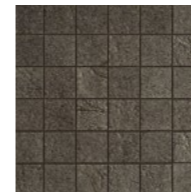


MORE N

MORE ARCH N



Elementi decorativi / Decorative elements / Éléments décoratifs / Dekorations-Elemente
 Elementos decorativos / Декоративные элементы / 装饰元素



MK.MORE 30T
30X30 / 12"X12"



MK.MORE 30B
30X30 / 12"X12"



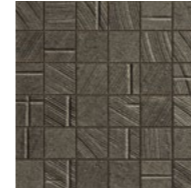
MK.MORE 30W
30X30 / 12"X12"



MK.MORE 30G
30X30 / 12"X12"



MK.MORE 30N
30X30 / 12"X12"



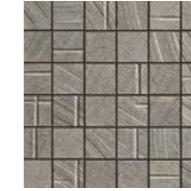
MK.MOREARCH 30T
30X30 / 12"X12"



MK.MOREARCH 30B
30X30 / 12"X12"



MK.MOREARCH 30W
30X30 / 12"X12"



MK.MOREARCH 30G
30X30 / 12"X12"



MK.MOREARCH 30N
30X30 / 12"X12"



60X60
24"X24"



30X60
12"X24"



30X30
12"X12"



15X15
6"X6"



60X60
24"X24"

MORE N

MORE 60N

MORE 36N

MORE 30N

MORE 15N

MORE 60N LP



60X60
24"X24"



30X60
12"X24"



30X30
12"X12"



15X15
6"X6"



60X60
24"X24"

MORE ARCH N

MORE ARCH 60N

MORE ARCH 36N

MORE ARCH 30N

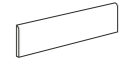
MORE ARCH 15N

MORE ARCH 60NLP

Gres porcellanato a massa colorata / Coloured body porcelain tile / Grès cérame teint dans la masse / Eingefärbtes Feinsteinzeug
 Gres porcelánico coloreado en masa / Керамогранит, окрашенный в массу / 彩胎瓷质砖

ISO 13006 - G - BIa (E ≤ 0,5%) UNI EN 14411 - G -

Pezzi speciali / Trims / Pièces spéciales / Sonderstücke
 Piezas especiales / Специальные элементы / 特制件

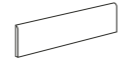


6X60 ▲
2.4"X24"



30X60 ▲
12"X24"

MORE T	MORE BT60T	MORE S60T
MORE B	MORE BT60B	MORE S60B
MORE W	MORE BT60W	MORE S60W
MORE G	MORE BT60G	MORE S60G
MORE N	MORE BT60N	MORE S60N



6X60 ▲
2.4"X24"

MORE T	MORE BT60T LP
MORE B	MORE BT60B LP
MORE W	MORE BT60W LP
MORE G	MORE BT60G LP
MORE N	MORE BT60N LP

ARTICOLO	DIN 51130 (R)	DIN 51097 (A+B+C)	BOT 3000 (DCOF)	BCR REP.CEC 6/81		DM 14/6/89 N.236	
				g.a.	g.b.	c.a.	g.b.
MORE T	R9	A	-	> 0,4	> 0,4	> 0,4	> 0,4
MORE B							
MORE W							
MORE G							
MORE N							
MORE ARCH T	R11	A+B	> 0,42	> 0,4	> 0,4	> 0,4	> 0,4
MORE ARCH B							
MORE ARCH W							
MORE ARCH G							
MORE ARCH N							



MORE 60W LP / MORE ARCH 60WLP



DESIGN & COORDINAMENTO
Marketing CC IMOLA

COPERTINA / COVER
Foto di / Photo by
Paolo Crocenzi

STAMPA / PRINT
golinelli communication lab

Indicazioni d'uso

Indications for use / Instructions d'utilisation
Anwendungsbereich / Indicaciones de uso
Указания по использованию / 使用说明



Pavimento

Floor tiles
Sol
Boden
Piso
Пол
地板



Rivestimento

Wall tiles
Revêtement
Wand
Revestimiento
Облицовка
墙面

Destinazioni d'uso

Suggested applications / Destination
Anwendungsbereich / Lugar de empleo
Предназначение / 用途



Abitazioni

Domestic purpose
Habitation
Wohnbereich
Habitación
Жилое помещение
住宅



Esterni

Outdoor floor
Extérieur
Aussenbereich
Exterior
Наружные части
户外



Commerciale leggero

Tiles for light commercial traffic area
Passage léger
Gewerblichen bereich
Pequeña superficie comercial
Торговое помещение с легкой нагрузкой
低流量商业



Commerciale pesante

Tiles for heavy traffic area
Passage intense
Gewerblichen bereich mit hoher beanspruchung
Grande superficie comercial
Торговое помещение с высокой нагрузкой
高流量商业



Commerciale pesante spessorato

Heavy commercial high thickness
Commercial intense forte épaisseur
Industrie bereich
Commercial pesado espesorado
Торговое помещение с очень высокой нагрузкой
垫层高流量商业

Finitura

Finish / Finition
Oberfläche / Acabado
Отделка / 终加工



Naturale

Natural
Naturel
Natur
Matt
Природный
自然式



Lappato

Honed
Adouci
Anpoliert
Esmenillado
Полуполированный
磨砂式



Levigato

Polished
Poli
Poliert
Pulido
Полированный
磨光



Patinato

Patinated
Patiné
Patinato
Glaseada
Патинированный
上釉

Aspetto superficiale

Surface look / Aspect superficiel
Aussehen der Oberfläche / Aspecto superficial
Внешний вид / 表面外观



Opaco

Matt
Mat
Matt
Opaco
Матовый
亚光



Satinato

Satin finish
Satiné
Mattiert
Satinado
Сатиновый
丝光式



Semilucido

Semi-glossy
Semi-brillant
Halbglänzend
Semibrillante
Полуглянцевый
半抛光



Lucido

Glossy
Brillant
Glänzend
Brillante
Глянцевый
抛光

Struttura

Structure / Structuré
Struktur / Estructura
Структура / 结构



Liscio

Smooth
Lisse
Glatt
Liso
Гладкий
光滑



Strutturato

Slate cut
Structuré
Strukturiert
Estructurado
Структурированный
结构式



Bocciardato

Bush-hammered rustic
Rustique bouchardé
Rustikal scharriert
Rústico bujardado
Рустикальный обтесанный бучардой
粗荔枝面

Bordo

Edge / Bord
Rand / Borde
Кромка / 边缘



Dritto

Straight
Droit
Gerade
Derecho
Прямой
直线型



Sagomato

Shaped
Profilé
Geformt
Perfilado
Фасонный
成形



Burrato

Tumbled
Vieilli
Getrommelt
Tomboleado
Галтовка
滚磨



Rettificato monocalibro

Monocaliber, rectified
Rectifié monocalibre
Rectifiziert monokaliber
Rectificado monocalibre
Ректифицированный монокалибр
单尺寸研磨式

Modulare

Modular / Modulaire
Modul / Modular
Модульный / 模块式



Modular X mm
Modulaire X mm
Modul X mm
Modular X mm
Модульный X mm
模块式 X mm

Stonalizzazione

Shade variation / Variation de nuances
Schattierung / Destonación
Разброс цветового тона / 石展化



v1



v2



v3



v4

Caratteristiche di vendita

Sales characteristics / Conditions particulières de vente
Vertriebsigenschaften / Características de venta
Характеристики продажи / 销售特点

▲ **Prodotto venduto unicamente a scatola intera.** Il prodotto non identificato con tale simbolo è da considerarsi in vendita al Mq. / Product sold only in complete boxes. If the product is not marked with this symbol it should be considered as sold by m². / Produit vendu par boitage entier uniquement. En l'absence de ce symbole, le produit peut être vendu au m². / Der Artikel wird nur in vollen Kartons verkauft. Ohne dieses Symbol wird er pro qm verkauft. / El producto se vende exclusivamente por cajas. Los productos que no están marcados con este símbolo se venden por m². / Продукт продается только целыми коробками. Продукт, не обозначенный данным символом считается продаваемым квадратными метрами. / 产品只可按整盒出售。没有带此符号的产品表示按照平方米出售。

△ **Prodotto venduto al pezzo** / Product sold by piece / Produit vendu à la pièce / Stückpreisverkauf / Producto vendido por unidades / Продукт продаваемый поштучно / 此产品按个出售



EVOLUTIONSTILE

leonardoceramica.it

A brand of
Cooperativa Ceramica d'Imola S.c.

Via V. Veneto, 13
40026 Imola (BO) Italia
Tel. +39 0542 601601
Fax +39 0542 31749
